

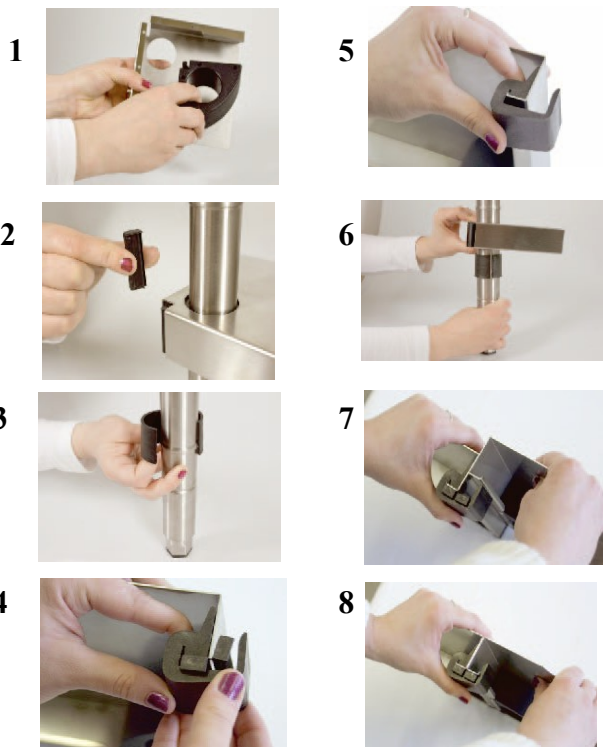


## Therma-Bamboo

Sistem brevetat de rafturi modulare ideale pentru depozite alimentare si frigorifice

### Montajul

Sistemul de rafturi modular Therma- Bamboo este executat din inox AISI 304, este modular si astfel, confera rapiditate la montare si o buna optimizare a folosirii spatiului de depozitare.



### Polite

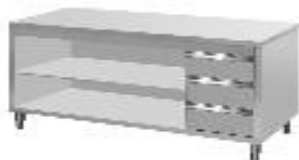
| Cod polita | Dimensiune l*L*h mm |
|------------|---------------------|
| P373/800   | 373*800*40 mm       |
| P373/1000  | 373*1000*40 mm      |
| P373/1100  | 373*1100*40 mm      |
| P373/1200  | 373*1200*40 mm      |
| P373/1300  | 373*1300*40 mm      |
| P373/1400  | 373*1400*40 mm      |

### Picioare

| Cod picior | Dimensiune diam 38 / L mm |
|------------|---------------------------|
| B1000      | 38/1000 mm                |
| B1100      | 38/1100 mm                |
| B1200      | 38/1200 mm                |
| B1300      | 38/1300 mm                |
| B1400      | 38/1400 mm                |
| B1500      | 38/1500 mm                |
| B1600      | 38/1600 mm                |
| B1700      | 38/1700 mm                |
| B1800      | 38/1800 mm                |
| B1900      | 38/1900 mm                |
| B2000      | 38/2000 mm                |

La cerere politele pot fi executate la dimensiunea ceruta de client si pot fi accesoryzate.

\* Ne rezervam dreptul de a modifica parametrii tehnici prezentati, in sensul imbunatatirii performantelor produselor noastre.

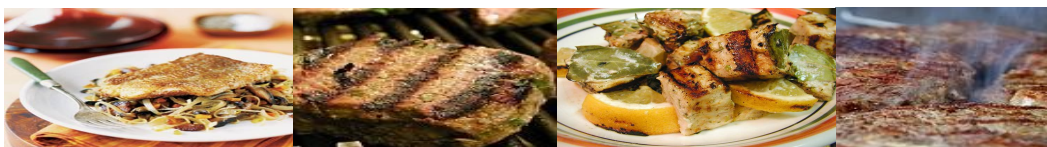







## Therma-Neutru

Sistem de mese de lucru, mobilier si spalatoare profesionale



Mobilierul de inox a fost conceput pentru a usura munca in bucatariile profesionale.  
Mobilierul nostru se poate executa la cerintele clientilor nostrii personalizat.  
Cateva din tipo-dimensiuni vi le prezentam mai jos.



|  |   |   |  |
|--|---|---|--|
| <br><b>M700+M900</b>     | <b>Masa de lucru cu picioare reglabile.<br/>M700+M900</b> | <b>1000 x 700 x 850 h<br/>1200 x 700 x 850 h</b>                                    | <b>1000 x 900 x 850 h<br/>1200 x 900 x 850 h</b>   |
| <br><b>N700+N900</b>   | <b>Masa de lucru cu dulap<br/>N700+N900</b>               | <b>1200 x 700 x 850+100 h<br/>1600 x 700 x 850+100 h<br/>2000 x 700 x 850+100 h</b> | <b>1200 x 900 x 850+100 h<br/>1600 x 900 x 850+100 h<br/>2000 x 900 x 850+100 h</b>  |
| <br><b>NR700+NR900</b> | <b>Masa de lucru cu rafturi<br/>NR700+NR900</b>           | <b>1600 x 700 x 850 h<br/>1600 x 700 x 850 h<br/>2000 x 700 x 850 h</b>             | <b>1600 x 900 x 850 h<br/>1600 x 900 x 850 h<br/>2000 x 900 x 850 h</b>  |
| <br><b>S700+S900</b>   | <b>Masa cu spalator<br/>S700+S900</b>                     | <b>1200 x 700 x 850+100 h      spalator- 500 x 500 x 350 h</b>                      | <b>1200 x 900 x 850+100 h      spalator- 500 x 500 x 350 h</b>   |
| <br><b>C620</b>        | <b>Carucior<br/>C620</b>                                  | <b>620 x 660 x 1900 h</b>   | <p>* Ne rezervam dreptul de a modifica parametrii tehnici prezentati, in sensul imbunatatirii performantelor produselor noastre.</p> |